

Wessex Homelift

VM RANGE



USER MANUAL

©Copyright 2024

Wessex Lift Co Ltd

All Rights Reserved

Except as expressly provided below, no part of this manual (***which are the original instructions***) may be reproduced, copied, transmitted, disseminated, downloaded or stored in any storage medium, for any purpose without the express prior written consent of Wessex. Wessex hereby grants permission to download a single copy of this manual and of any revision to this manual onto a hard drive or other electronic storage medium to be reviewed and to print one copy of this manual or of any revision hereto, provided that such electronic or printed copy of this manual or revision must contain the complete text of this copyright notice and provided further that any unauthorised commercial distribution of this manual or any revision hereto is strictly prohibited.

Information in this document is subject to change without notice. Wessex reserves the right to change or improve its products and to make changes in the content without obligation to notify any person or organisation of such changes or improvements.

Manufacturer:-
Wessex Lift Co Ltd
Budds Lane,
Romsey, SO51 OHA, UK

Tel. (+44) 01794 830303
Fax. (+44) 01794 512621

Web site address: www.wessexlifts.co.uk

RECORD OF REVISIONS

Revision	Revision Date	Description	ECO
A	04/03/2021	Provisional Issue	1675
B	19.6.2023	Smoke detector options updated and Pushbutton Changes	1808
C	20.5.2024	300kg Option released	1832

CONTENTS

	Page
1. INTRODUCTION	5
2. SAFETY NOTE	6
2.1 Safe Working Load.....	6
2.2 Typical Installation Arrangement Diagram.....	7
3. LIMITED WARRANTY	8
4. LIFT FEATURES	9
4.1 In-Car Alarm	9
4.2 Vision Panels	9
4.3 Safety Devices	9
4.3.1 Aperture Board	9
4.3.2 Car Sensitive Safety Edges	9
4.3.3 Under-Lift Platform Sensitive Surface	9
4.4 Finishes	9
4.5 Door	10
4.6 Electrical Features	10
4.7 Emergency Features	10
4.7.1 Battery Back-up Features	10
4.7.2 Emergency Lowering by the Lift User	10
4.7.3 Emergency Lowering at Pump Unit	10
4.7.4 Hydraulic Pipe Failure	10
4.7.5 Fire Detectors	11-12
4.8 Fire Sealing	13
4.9 Design Features.....	13
4.9.1 Door Closing Strap	13
4.9.2 Grab Handles	13
4.9.3 In-Car Lighting	13
4.9.4 In-Car Seating	13
4.9.5 Lap Strap	13
4.9.6 Wireless Controls.....	13
4.9.7 Telephone	13
4.9.8 Autohoming	13
4.9.9 Auto-Door Closing.....	13
4.9.10 In-Car Key-Switch	13
4.9.11 Fire Detectors.....	13
4.9.12 Control Circuit	13
4.10 Illuminated In-Car Controls	14
4.11 Wireless Wall Mounted Call Stations.....	14
4.11.1 Wireless Call Station Battery Replacement.....	15
4.11.2 Adding a new Wireless Handset to the System.....	15

5. OPERATING INSTRUCTIONS	16
5.1 In-Car Control Buttons.....	16
5.2 Calling and entering the Lift	17
5.3 Travelling to the desired floor.....	18
5.4 Changing direction of travel.....	18
5.5 Vacating the Lift.....	18
5.6 After use.....	19
5.7 Use of Alarm.....	19
5.8 Courtesy Lights.....	19
6. TROUBLE SHOOTING	20
6.1 Electrical Power Failure.....	20
6.2 Emergency Door Opening.....	21
6.3 Emergency Lowering (Using Lift Controls).....	22
6.4 Emergency Manual Lowering (At Pump Unit).....	22
7. SERVICING & INSPECTION	23
8. ROUTINE CARE AND MAINTENANCE	24
9. CHANGE OF USE	25
9.1 Dismantling.....	25
9.2 End of Product Life.....	25
10. SAFETY INSTRUCTIONS FOR MAINTENANCE PERSONNEL	26
10.1 Mechanical Safety.....	27
10.2 Electrical Safety.....	27
10.3 Hydraulic Safety.....	27
11. TECHNICAL INFORMATION	28
11.1 Anchorage and Forces.....	28
11.1.1 Mid-Floor.....	28
11.1.2 Lower Level.....	28
11.1.3 Upper Level.....	28
11.2 Electrical Connection.....	28
11.3 Noise Emission.....	28
12. QUICK START GUIDE	29
Calling the lift (step by step guide).....	30
Calling the lift (step by step guide).....	31
Changing Direction of Travel (step by step guide).....	32
13. SERVICE AND INSPECTION RECORD	33
14. EC DECLARATION OF CONFORMITY	34

1. INTRODUCTION

Thank you for deciding to purchase the Wessex Homelift. The Wessex range of Homelifts combines the latest technology and design, making them easy to use and less obtrusive in your home, whilst offering long service and reliability.

The Wessex Homelift is a direct acting hydraulic lift designed for single person use internally in a domestic dwelling. When travelling in the lift car, the person must be either seated or in a wheelchair. There are sixteen lift types available:

- VM30 compact non-wheelchair model 3m maximum travel height.
- VM31 wheelchair model 3m maximum travel height.
- VM36 large wheelchair model 3m maximum travel height.
- VM38 largest wheelchair model 3m maximum travel height.
- VM50 compact non-wheelchair model 3.5m maximum travel height.
- VM51 wheelchair model 3.5m maximum travel height.
- VM56 large wheelchair model 3.5m maximum travel height.
- VM58 largest wheelchair model 3.5m maximum travel height.
- VM3136 wheelchair model 3m maximum travel height. (VM31 width x VM36 length)
- VM3138 wheelchair model 3m maximum travel height. (VM31 width x VM38 length)
- VM3638 wheelchair model 3m maximum travel height. (VM36 width x VM38 length)
- VM3836 wheelchair model 3m maximum travel height. (VM38 width x VM36 length)
- VM5156 wheelchair model 3.5m maximum travel height. (VM31 width x VM36 length)
- VM5158 wheelchair model 3.5m maximum travel height. (VM31 width x VM38 length)
- VM5658 wheelchair model 3.5m maximum travel height. (VM36 width x VM38 length)
- VM5856 wheelchair model 3.5m maximum travel height. (VM38 width x VM36 length)

Wessex Lift Co Ltd has extensive experience in providing products that aid mobility and is the pioneer of the majority of today's domestic lifts. With this background and many years experience in the manufacture and installation of Vertical Lifts, Wessex is clearly the most experienced company in the market place today. Our in-depth knowledge of associated building and electrical work and management expertise ensures that installations are completed with the minimum of inconvenience.

This instruction manual will help you become accustomed with your lift.

- We ask that you study this manual and become familiar with the step by step instructions.
- Ensure that a nominated person is also familiar with the instructions, especially the operating procedures in the unlikely event of a breakdown.
- Keep the manual in a safe place for future reference together with the electrical wiring diagram.
- The door release key should always be kept clipped in its place inside the lift car on the opposite side to the control console.
- The pump unit key should be kept in a safe place.

2. SAFETY NOTES



- **WARNING!** Keep all parts of your body inside the lift at all times, and do not lean out of the lift.
- **WARNING!** Do not use the lift during a fire.
- Please always remain seated whilst travelling in the lift.
- Children must not be allowed to tamper or play with the lift or tracks.
- Joyriding is dangerous. If young children are in the dwelling or likely to visit, It is strongly recommended the lift is moved away from the upper and lower level position. The two handsets can then be removed from the wall mounting brackets and placed in a safe place. This will prevent unauthorised access and use of the lift.
- Children must be supervised at all times when the lift is in use.
- During travel do not impede the car or aperture board.
- Ensure that all persons, especially children and pets, are kept clear of the lift prior and during travel.
- Obstacles must not be placed on the aperture board or beneath the car.
- The Fireseal is only effective when the lift is parked at either the upper or lower level.

2.1. SAFE WORKING LOAD

The MAXIMUM safe working load of the lift is:

- *VM30/50/38/58/3138/5158/3638/5658/3836/5856 Models 250kg.* Never exceed this capacity.
- *VM31/51/36/56/3136/5156 Models either 250kg or 300kg depending on the option selected.* Please refer to Safe Working Load Label fitted within the Lift to verify the load capacity. Never exceed this capacity.

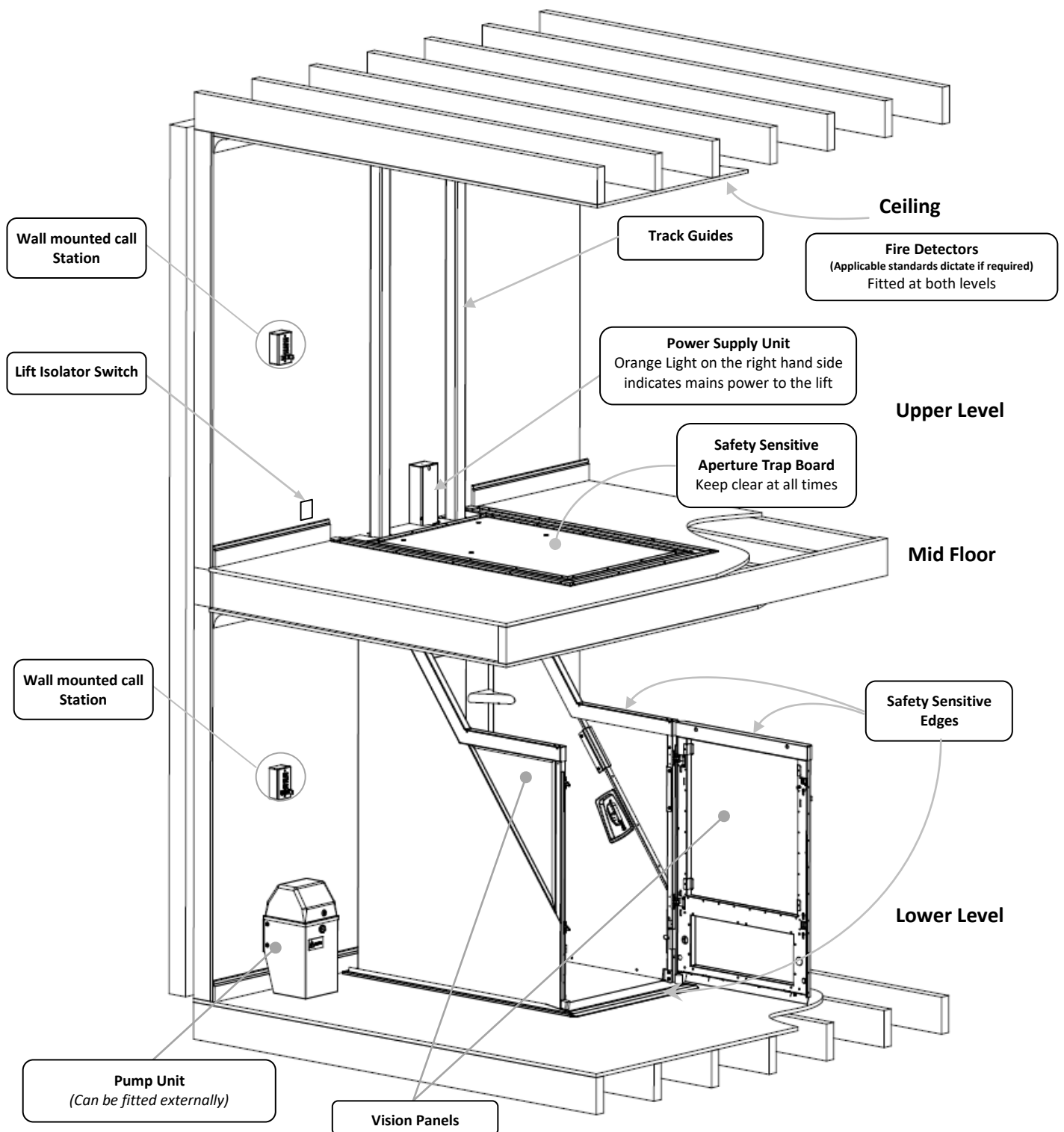
The lift must never be used for anything other than the intended use. It must never be used for transporting furniture or any other type of goods.

The safe working load of the aperture trap board is 250kg, uniformly distributed. Never place furniture, ladders or any permanent loads on top of the trap board. It must be kept clear at all times.

It is important that the aperture trap-board is *not made wet* in any way as this may change the strength characteristics of the board and cause a potential hazard. A weakened trap board will need to be replaced.

The seat has a safe working load of 150kg or 190kg if selected. (Options)

2.2 Typical Installation Arrangement Diagram.



Note: Arrangement is subject to change without notice.

3. LIMITED WARRANTY

This covers the repair or replacement of any parts found to be defective due to manufacturing errors for one year, from the initial date of installation or dispatch.

Extended warranties are available.

This warranty does not cover failure attributed to abuse, misuse, accidental damage or unauthorised alterations/repairs.

To obtain a warranty repair contact your current service provider.

Breakdown Service

Should you require an engineer to attend site please contact your current service provider.

Wessex Breakdown Service

If Wessex is your current service provider please refer to the details below.

Wessex Lifts Customer Care Department opening hours:

- Monday to Thursday 08:30 – 17:15
- Friday 08:30 – 15:30
- Closed on public holidays

Wessex engineers will aim to visit site within 24 hours (*Monday to Friday*) to attend a break down call. (*Providing we are your current service provider*)

Calls for assistance outside normal office hours will be handled by our emergency cover service. Every effort will be made to attend such calls within 24 hours. However there is no guarantee an engineer will be available during these hours. Wessex can be contacted by telephone out of hours, and a member of staff will initiate the necessary actions to resolve the problem.

For further information on breakdown cover or servicing please contact Wessex Lifts, or your current service provider.

In the event of a problem the unit should be isolated to prevent further use.

Contact Details:

Wessex Lift Co. Ltd.
Budds Lane
Romsey
United Kingdom
SO51 0HA

Telephone: (+44) 01794 830303

Email: repairs@wessexlifts.co.uk

4. LIFT FEATURES

The lift can be configured to include a variety of options to suit your requirements, the following section details the features that are available for this product, and gives a brief overview into their function and operation. *Please note some of the options may not be installed on your lift.*

4.1. In-Car Alarm – Optional. This feature provides a means of raising attention within the property in the unlikely event of a breakdown. If fitted the alarm pushbutton is mounted inside the car on the control console. (See section 5 for more details)

4.2. Vision Panels – The lift car has vision panels as **standard** in the sides and door. This gives an airy feel to the lift and reduces the amount of light loss when using the lift.

4.3. Safety Devices – There are several safety features that are included as **standard** on your Homelift. These are as follows: -

4.3.1. Aperture Board Sensitive Surface – If during raising or lowering of the lift, the aperture board is impeded in any way, the lift will **STOP** immediately. This is achieved by the built in safety systems which are integral to the design of the lift.

4.3.2. Car Sensitive Safety Edges – The upper edges of the lift car (sides and top of door) are protected by sensitive devices that **STOP** the lift immediately if any obstruction is detected whilst the lift is travelling upwards.

4.3.3. Under Lift Platform Sensitive Surface – The underside of the lift has a pressure sensitive surface, which is designed to **STOP** the lift if an obstruction is detected. This feature has been incorporated to protect small children in the event that they walk into the lift area during descent. This platform will also stop the lift when it's travelling upwards, if the platform is pulled down.

All of the above safety devices are integral to the lift and make the Homelift intrinsically safe.

4.4. Finishes – The interior and exterior metalwork of your Homelift is coated in a hard wearing powder coat which will provide protection against knocks and daily usage.

The colour of your lift is pearl grey and this is complemented by coloured ABS panels which are fitted to the rear and sides within the car.

The floor is coated with an anti-slip finish which will aid traction of wheel chairs and provide a hardwearing surface. It can be easily cleaned with a stiff brush if required.

4.5. Door – The door can be either powered (**Optional**) or manual (**Standard**) depending upon the options you have selected. The lift will only function if the door is properly closed and interlocked. It cannot be opened between floors, (except in an emergency). A powered door will open or close automatically when the blue door button is pressed, and stop in the open or closed position. A manual door has to be physically pushed open or closed after pressing the blue door button, or pressing the door safety edge down.

4.6. Electrical Features – The Lift operates on one of the following supplies, depending on the country and option selected: -

- 230Vac 50Hz supply
- 230Vac 60Hz Supply
- 120Vac 60Hz Supply

The supply must be protected by an RCD. The supply voltage is transformed down to provide all control buttons with a low voltage 24V DC supply.

4.7. Emergency Features – The Wessex Homelift contains several facilities for dealing with emergency situations which may be caused by external influences such as power failure etc... These are as follows: -

4.7.1. Battery Back-up Features – In the event of an electricity supply failure/power cut, the following lift functions will continue to be in operation: -

- Emergency Lowering
- All Safety Devices
- Powered Door (Optional)
- Stop Buttons
- In-Car Alarm (Optional)
- Door Lock
- Integral Lighting

4.7.2. Emergency In-Car Lowering by the Lift User – Should the lift stop due to a power failure, the down pushbutton will illuminate. This allows the user to lower the lift to the lower level by simply pressing this button.

4.7.3. Emergency Lowering at Pump Unit – In extreme cases it may not be possible to lower the lift using the emergency lowering button as mentioned above. Therefore, means to do this is provided in the pump unit itself. (See troubleshooting section 6.4)

4.7.4. Hydraulic Pipe failure – In the unlikely event of an oil pressure pipe failure, a safety valve will immediately stop the lift.

4.7.5. Fire Detectors – The applicable standards dictate if they are required.

If required fire detectors are supplied and fitted. These are connected to the lift. If a fire is detected an alarm will emit an audible warning and render the lift inoperative, to prevent its use.

If a fire is detected whilst you are travelling in the lift, it will continue its journey in the direction of travel and stop at the intended level. You can change direction mid-travel if you wish by pressing the stop button (*one touch controls*) or releasing the relevant button (*hold to run controls*), followed by the desired green button. Once the lift reaches the intended level you will be able to open the door and exit the lift as normal. The lift will then become inoperative to prevent its use.

If the lift is parked at the upper level or the lower level and a fire is detected, the lift will remain stationary and become inoperative.



Please refer to the fire detector manufacturer's instructions regarding their operation, testing and service requirements.

WARNING! Do not use the lift during a fire.

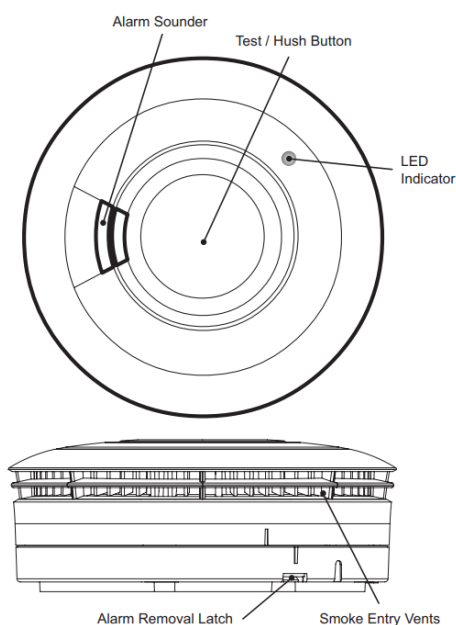
Testing and maintaining your detectors

A minimum of two detectors are fitted. The detector type varies depending on the option selected and type of room served.

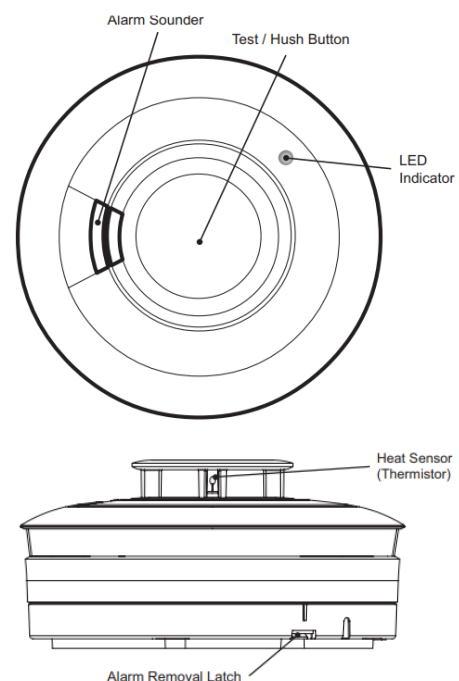
Optical Detector: Hall, Corridors, Living Rooms & Bedrooms

Heat Detector: Kitchen & Garages

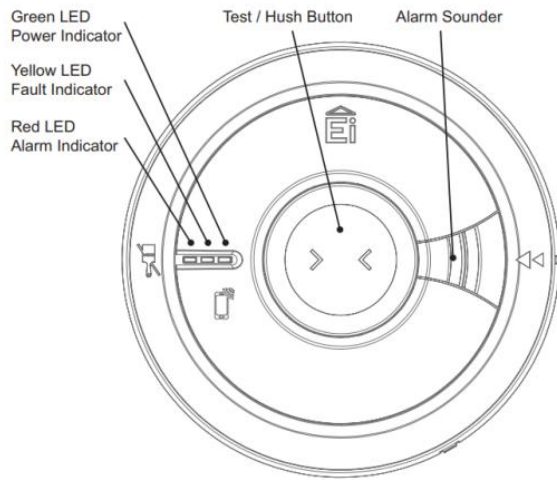
Battery Powered Optical Alarm



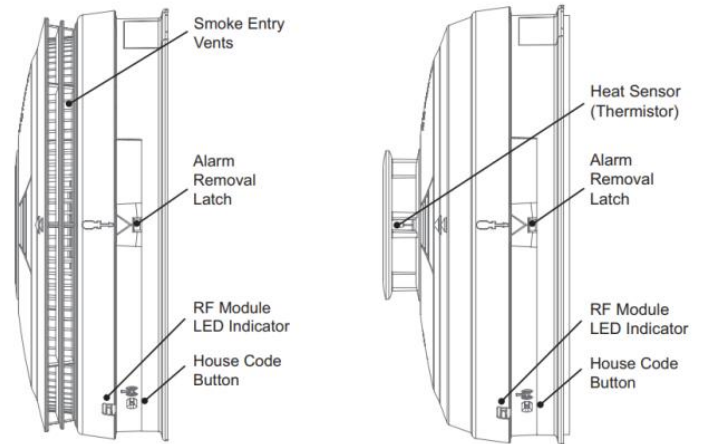
Battery Powered Heat Alarm



Mains Powered Optical Alarm



Mains Powered Heat Alarm



IMPORTANT: Please read the fire detector manufactures instructions for full details on testing and care of your detectors.

Frequent testing of all your detectors is a requirement to ensure they function correctly. It is recommended they are tested as follows:

1. After the system is installed.
2. Once monthly thereafter.
3. After prolonged absence from the dwelling. (e.g. after a holiday period)
4. After repair or servicing of any of the systems elements or household electrical works.
(Mains powered option)

Refer to the Manufacturer's instructions for details on how to perform the test.

4.8. Fire Sealing – All models incorporate a fire seal which is effective when the lift is parked at the upper floor level or the lower floor level. Wessex Lift Co Ltd recommends that the lift is parked at either the upper floor level or lower floor level when not in use.

4.9. Design Features – There are several design features available to help the user operate the lift, these include the following. Please note that not all are applicable, and are dependent on the model and options selected at the point of sale.

4.9.1. Door Closing Strap – A textured rope type pull cord is fitted to all manual doors as standard to allow the door to be closed easily from within the lift.

4.9.2. Grab Handles – With front or side mounted positions available, these handles allow the user points on which to ease themselves into the lift car.

4.9.3. In-Car Lighting – Internal illumination of the lift car is provided which automatically switches off when the lift is not in use. In the event of a power failure the in-car lights will operate as normal. This back-up lighting feature is powered by rechargeable batteries and fitted as standard.

4.9.4. In-Car Seating – An in-car seat option is available. Maximum rated load of the seat is 150kg, unless the 190kg option is selected. The seat can fold up neatly away by simply lifting the front edge of the seat up until it is in the vertical position.

4.9.5. Lap Strap – Where in-car seating is selected a lap strap with quick release buckle can be offered to suit.

4.9.6. Wireless Controls – Additional wireless controls are available to control some functions of the lift.

4.9.7. Telephone – An in-car telephone option is available.

4.9.8. Autohoming – An autohoming option is available. This will automatically send the lift to the upper level after a set period of time when the door is in the closed position. (*'Homed' position*).

4.9.9. Auto-Door Closing – An auto-door closing option is available. This will automatically close the lift door after a set period of time.

4.9.10. In-Car Key-Switch – An in-car key-switch option is available. This will disable the up, down and stop button on the in-car control panel.

4.9.11. Fire Detectors – Fire detectors are available. These are linked to the lift, and will disable the operation of the lift in the event of a fire. The applicable standards dictate if this option is mandatory.

4.9.12. Control Circuit – Please note there are two options for the control circuit. 'One touch' and 'hold to run'. This function only applies to the up and down pushbuttons. The hold to run option requires the relevant green arrow push button to be held constantly whilst the lift is travelling.
The applicable standards dictate which option is selected.

4.10. Illuminated In-Car Controls – For ease of use, only the active available pushbuttons within the car will illuminate. If for example you are at the upper level, the green up arrow will not be illuminated. This is because that function is not available as the lift is already at the upper level.

The reverse applies if you are at the lower level.

A more detailed explanation of operation is given in section 5.

4.11. Wireless Wall Mounted Call Stations – The handsets can be used to call and send the lift to the required level. If a powered door option has been selected they can be used to open and close the door.

They clip to a bracket attached to the wall.

They must be positioned in clear line of site with the lift, and in both rooms the lift services.

If desired, the handset can be unclipped from its bracket and used as a portable handset.

Once unclipped, the user can place the handset in a secure location to prevent unauthorised use.

However it is recommended the wireless handset remains clipped on the wall bracket when the lift is in use, so that control of the elevator is maintained at both levels.

Two handsets are supplied as standard. Additional handsets can be purchased and added to the system.



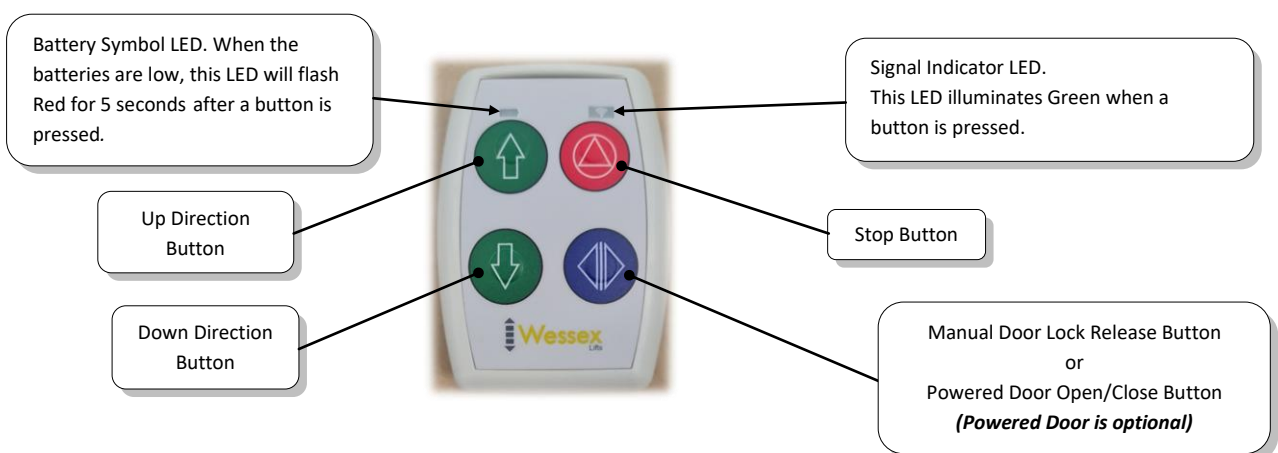
Wireless Call Station
Wall Bracket



Wireless Call Station



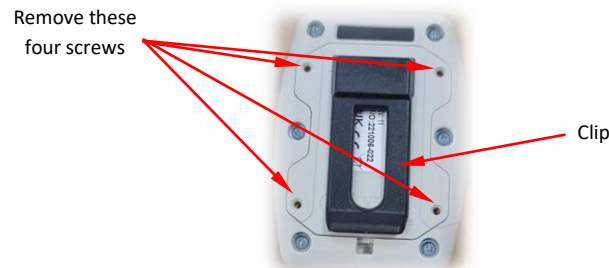
Rear of Wireless Call Station



Note: The Green LED illuminates only when a button is pressed.
When the batteries are low, the Red LED will flash for 5 seconds after a button is pressed.

4.11.1 Wireless Call Station Battery Replacement

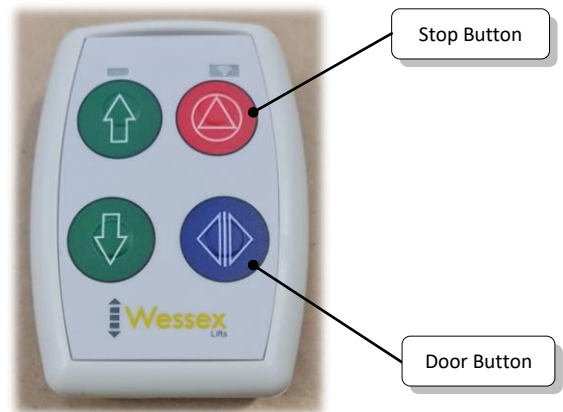
Each wireless call station handset requires three AAA batteries. We recommend the batteries are replaced annually by the service provider, or another competent person. To replace the batteries, remove four screws on the rear of the handset. Pull the clip to aid the removal the battery cover and gain access to the battery compartment. Please see below.



Rear of Wireless Call Station

4.11.2 Adding a New Wireless Handset

1. Using a functioning paired handset, press and hold the **Red Stop** and **Blue Door button** simultaneously for 5 seconds.
2. You will hear a short bleep. The bleep indicates the start of a ten second period in which a handset can be added.
3. Press and hold the **Red Stop** and **Blue Door button** simultaneously for 5 seconds on the handset to be added.
4. At the end of the ten second period you will hear two long bleeps. This indicates the system has returned to its normal operating condition.
5. Test all handset buttons function correctly.



Wireless Handset

5. OPERATING INSTRUCTIONS

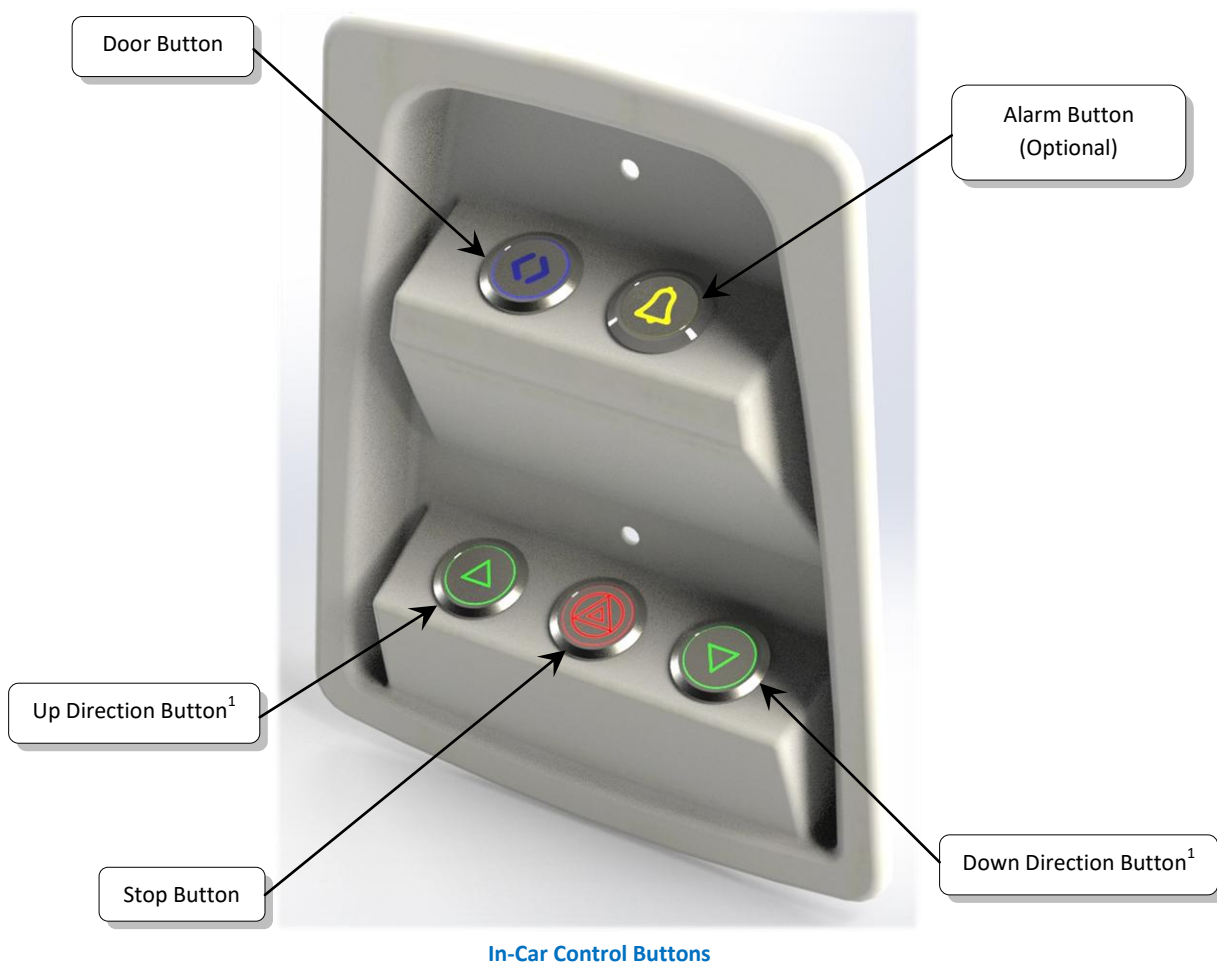
5.1. In-Car Control Buttons – It is recommended you study the diagrams below to make yourself familiar with the controls.

Please note there are two options for the control circuit. ‘One touch’ and ‘hold to run’. This function only applies to the up and down direction buttons.

- One Touch - Press and release the relevant direction button to travel
- Hold to Run - Press and hold the relevant direction button to travel.

This setting is dependent on the applicable standard and your own personal circumstances.

The control setting selected will be explained when the lift is demonstrated.



Note 1: Up and Down buttons may be reversed; depending on which side the In-Car Control Console is mounted.

Only the available pushbuttons will illuminate.

5.2. Calling and entering the Lift – the following sequence assumes the lift is parked at the upper level and you are at the lower level. Keep clear of the lift while it is in travel. Keep clear of the door while it is opening and closing.

Note: The lift up & down controls will be either 'hold to run' - You have to press and hold the button to travel or 'one touch' – Press and release the button. This setting is dependent on the applicable standard and your personal circumstances.

- Ensure you are clear of the lift.
- Press the Down (**Green Arrow**) direction button.
- The lift will descend to the lower floor level and automatically stop.

Opening the Door

- **For manually operated doors** - Press the door safety edge (on top of the door) and gently pull the door open.
- **For powered doors** - Ensure you are clear of the door, press and release the **Blue** door button on the wall mounted call station and the door will automatically open.



Notes: A powered door can be opened manually by following the manually operated door instructions. It will require a small amount of force to disengage the driving mechanism. This must be manually re-engaged before the power door will operate again.

IMPORTANT! Do not lean on the safety edge without opening the door otherwise the lift will not operate. You will need to reset the door by opening and closing the door if this happens.

Entering the Lift (with Seat)

- Enter the car and use the seat provided. Use the lap strap if fitted. (Option)

Entering the Lift (Wheelchair Model)

- It is recommended that you reverse the wheelchair into the car wherever possible.

Closing the Door – Manually

- The door can be closed by pulling the door closing strap until the door latches shut. The door must be fully closed and latched before operating the lift otherwise the lift will not function; this is part of the inbuilt safety mechanism.

Closing the Door – Powered Option

- Press and release the **Blue** door button and the door will close and lock automatically.

5.3. Travelling to the desired floor level.

The door must be closed and locked before the lift will travel. The stop button will illuminate to confirm the door is closed and locked. There may be a small time delay after closing the door for this to occur.

- Press the direction **(Green arrow)** button to travel, the lift will start to move.

Note: The stop button can be used at any point during travel if required.

5.4. Changing Direction of Travel

If you wish to return to the floor that you have just departed from, mid journey, you can simply stop the lift by: -

- Pressing and releasing the Stop button. The lift will stop.
- After a 3 second delay, the Up and Down **(Green Arrow)** buttons will illuminate.
- Press the appropriate direction button, the lift will travel to the selected level and automatically stop.

5.5. Vacating the lift

Once the lift has arrived at the desired level the door can be opened.

Opening the Door – Manually

- The door can be opened manually by either, pressing and releasing the **Blue** door button and gently pushing the door open.
- Or by pressing the door safety edge down and gently pushing the door open.

Opening the Door – Powered Option

- Press and release the **Blue** door button and the door will open automatically.

Move forward and exit the lift.

Closing the Door – Manually

- Gently push or pull the door closed until it is locked in position.

Closing the Door – Powered Option

- Press and release the **Blue** door button and the door will close automatically.

5.6. After Use

When the lift is not in use, Wessex Lift Co Ltd recommends the lift is parked at the upper floor level or lower floor level. This ensures the fire seal is maintained between the lower and upper levels. To do this press the up or down direction button (**Green Arrow**) from the wall mounted call station. The lift will travel and stop automatically.

If the lift is left for long periods of time it is recommended to leave it at the lower level. Please do not turn the power off, the lift has a battery back-up system and this will damage the battery life.

5.7. Use of the alarm (Option)

In the event of an emergency and if assistance is required, press and hold the alarm button located in the In-Car Control Console. **Please note this will only alert someone within hearing distance of the lift.**

5.8. Courtesy Lights

The lift car is fitted with courtesy lights which will illuminate in the following situations: -

- When the door safety edge is pressed.
- When the *Blue* door button is used.
- When any of the up or down buttons are pressed.

After calling the lift and within a set period, the lights will automatically go out. They will illuminate again when either the door or up and down buttons are operated.

6. TROUBLESHOOTING

Check the following if the lift will not operate:-

- Open and close the door. Ensure it is fully closed and locked.
- There are no obstructions under the lift.
- There are no obstructions on top of the aperture trap board.
- Turn the key-switch if fitted. (Option)
- The orange light on the power supply unit is illuminated. (*Refer to Section 6.1.*)

6.1. Electrical Power Failure

The orange light on the right hand side of the power supply unit is illuminated when there is mains power to the lift. (*Reference page 7*) If the orange light is not illuminated check the following:-

- The lift isolator switch is on and the fuse is ok. (*This should be located near the lift*)
- The main distribution lift circuit breaker and RCD are both switched on.

In the event of a power failure the lift has a battery back-up feature that enables the following features to operate: -

- Lift lights
- Lift alarm (*Option*)
- Door operation
- Descent using any down direction button
- Lift safety devices

Please note the self levelling device will not function (*refer to note below*) in the event of mains power failure. A 'Shoot Bolt' safety device restricts the distance the lift can creep down when the lift is at the upper floor position. If the lift is left for a long period of time with no mains power, it will stop on the shoot bolt and can NOT be lowered by either the battery backed emergency lowering, or the manual emergency lowering. The lift can only be re-used when the mains power returns.

The lift is fitted with a self-levelling device. When the lift is left at the upper level it will gradually creep down a maximum of 25mm, the lift will then automatically re-level to the upper level. If the lift creeps up when at the upper level, it will automatically re-level down to the upper level.

6.2. Emergency Door Opening

Both manual and powered doors can be opened from the inside or outside of the lift car by using the door release key supplied with the lift. See Figure 6.2



WARNING! The door release key should only be used in the event of an emergency. The key will override the safety features. Ensure the lift is at the lower or upper level before attempting to manually override the door.

To open the door, use the following procedure: -

- Ensure the lift is either positioned at the lower floor or the upper landing level.
- Place the key in the bottom of the slot in the door panel and gently push and lift up as in Fig 6.21
- Gently push or pull the door open whilst holding the key.

Safety Note:

In the interests of Health & Safety, please ensure the Door Release Key is never left in the lock access hole. To guard against this, the key is fitted with an integral spring.

It is recommended that the key is always stored opposite the control console as shown in Fig 6.2.



Fig 6.2 Door Release Key – Located Opposite In Car Controls

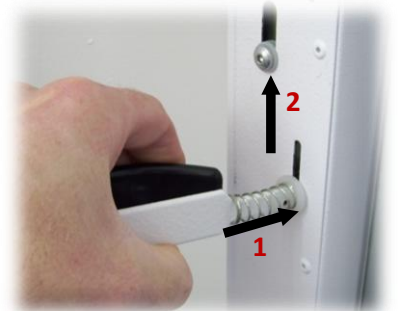


Fig 6.21 Door Release

6.3. Emergency Lowering Using In-Car Controls or Call Stations

If your Homelift has been rendered inoperable due to a power failure, it can be lowered pressing any of the down arrow pushbuttons, either within the Lift car or at either call station. **Note: All safety devices are still operational.**

6.4. Emergency Manual Lowering at the Pump Unit



WARNING! Safety features will not work when the manual emergency lowering procedure detailed below is used.

WARNING! Ensure the area beneath the lift is clear of any obstructions and remains clear, before starting any of the below procedures.

This procedure must only be carried out by a trained and competent person, and only used if the procedure given in 6.3 fails to work.

Please note there are two options for the pump unit:

- 'Single solenoid valve' - One red coloured knob on the solenoid valve.
- 'Twin solenoid valve' - One red coloured knob and one black coloured knob on the solenoid valves.

The applicable standards dictate which option is selected.

Note: This procedure will only work if the lift is at least 50mm (2") below the upper level.

- Ensure both the lower level area underneath the lift and upper floor level around the lift is kept clear from any children, pets or other obstructions.
- The lift must be under constant surveillance whilst this procedure is performed.
- Ensure the electrical supply to the lift is switched off.
- Open the lid of the Hydraulic pump using the key provided with the lift. **(See Fig 6.4)**
- Pull the red knob and push the black button (if fitted) as shown **(See Fig 6.41)** and the lift will begin to lower, releasing any one of the buttons will stop the lift.
- When the lift has reached the lower level the door can be opened and the user can vacate the lift.



Fig 6.4



Fig 6.41 - Lowering Valves

7. SERVICING & INSPECTION

When installed your lift would have been commissioned and inspected to ensure safety and reliability. The Wessex Homelift should give you many years of service as long as regular maintenance is correctly carried out. Failure to do this could lead to unreliable or unsafe operation.



The Homelift is guaranteed for 12 months, unless you have purchased an extended warranty at the same time as purchasing your Homelift. Alternatively, you may wish to establish a maintenance agreement that will provide for routine servicing for a period of time thereafter.

Wessex Lift Co Ltd, recommend that the Homelift is checked and serviced every 6 months. Safety-related components must only be adjusted and reset by a competent person.

The lift must be serviced to the BS 5900 schedule, in addition to this Wessex Lift Co Ltd have routine check lists and lubrication schedules which includes checks on the following: -

- Suspension member checks.
- Safety-interlock checks.
- Electrical integrity checks.
- Hydraulic safety valve checks.
- Hydraulic leakage checks – (e.g. hoses and fittings etc.).
- Lubrication.
- Screws and Nuts (as applicable).

For all enquiries regarding service please contact your current service provider.

8. ROUTINE CARE AND MAINTENANCE

To ensure that your Homelift continues to offer reliable service and continues to keep its appearance it is recommended that routine cleaning of the unit is carried out as required. The Homelift can be treated as any other normal household appliance.

Before carrying out any cleaning work it is important that the main supply is switched off to the lift. This is located adjacent to the lift.

- A variety of household cleaners can be used to clean your Homelift, but please be sure that you **do not use abrasive cleaners** of any form and that the cloth used is damp and **not soaking wet**. Please read the cleaning product label before applying to the Homelift.
- It is important that the aperture 'in fill' or trap-board is **not made wet** in any way as this may change the strength characteristics of the board and cause a potential hazard. A weakened trap board will need to be replaced.
- Transparent vision panels can be cleaned with a household glass cleaning product. **Do not use abrasive cleaners** and again please read the product label before applying to the Homelift.

Important safety note

Do not under any circumstance paint the lift or the guide tracks as this could seriously impede the sliding mechanism and therefore the running of the lift. Additionally, any such action will render the warranty void.

9. CHANGE OF USE

During the useable life of the Wessex Homelift it may be possible that circumstances change and hence the function of the lift may not be suitable to the new situation. Examples of this are: -

- A change of type and weight of wheelchair.
- A change in the user's ability.
- A change in user.
- An installation at another site.
- A change in duty cycle (number of journeys per hour).

Any such changes to the use of the lift must be discussed with Wessex Lift Co Ltd who will be best able to advise whether any alterations to the installation will be required.

9.1 Dismantling

If dismantling of the Wessex Homelift is required, this should be done by a competent person who has been fully trained in its installation and is qualified to provide safe disconnection from the mains terminal.

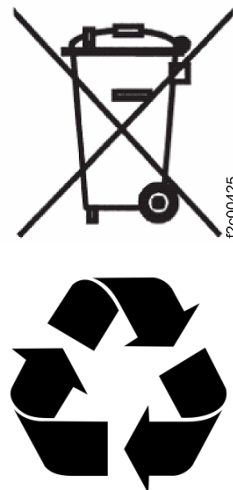
Personnel dismantling the Wessex Homelift must wear appropriate personal protective equipment and have a spill kit to hand as a precaution. Waste items and fluids must be disposed of in an environmentally safe manner.

9.2 End of Product Life

The Manufacturer encourages its agents/suppliers to properly dispose/recycle batteries and other electronic components in accordance to Federal State and local regulations.

The lift is manufactured from various materials (*Plastics, Steel, Aluminium etc...*) that can be readily recycled. However the materials should not be disposed of at your local waste point.

Once your product has finished its useful life we recommend contacting your re-seller to arrange disposal.



10. SAFETY INSTRUCTIONS FOR MAINTENANCE PERSONNEL

The Wessex Homelift is a combination of electrical, mechanical and hydraulic systems. All maintenance activities, including the adjustment and resetting of safety-related components, must be carried out by a trained and competent person.

Before commencing any maintenance you must adhere to the following instructions. Under no circumstances must the lift be operated with the rear panel removed or any safety device inoperative.

1. Refer to the installation manual for essential health and safety guidelines.
2. Switch off the lift power supply.
3. Close the hydraulic shut-off valve located in the powerpack (see Fig. 11.1).
4. Ensure the powerpack lid is secured and locked.
5. Switch on the lift power supply to fault find as necessary.

It is safety critical that any parts replaced are correct. Use of incorrect parts may affect the safety of the lift. Spare parts must be sourced from Wessex Lift Co. Ltd. Waste items and fluids must be disposed of in an environmentally safe manner.

Be aware that other people could inadvertently operate the lift during maintenance. Before starting any maintenance activity, make others in the building aware. Where there is a risk to yourself or the public, isolate the lift area using safety barriers.

Make use of the relevant personal protective equipment for the task, e.g. safety footwear, safety glasses, protective gloves, ear protection. Observe safe practise when manual handling or working at height.

Plan your work. Make yourself aware of the potential risks before proceeding with any maintenance activity. Take suitable precautions to avoid or minimise the risks.

10.1 Mechanical Safety



WARNING! Trapping and shearing hazards will be created if the lift is operated with the rear panel removed and/or any safety device inoperative. Before commencing any maintenance you must adhere to the following instructions:

1. Refer to the installation manual for essential health and safety guidelines.
2. Switch off the lift power supply.
3. Close the hydraulic shut-off valve located in the pump unit (see Fig. 11.1). This is essential to prevent inadvertent movement of the lift.
4. Ensure the pump unit lid is secured and locked.
5. Switch on the lift power supply to fault find as necessary.

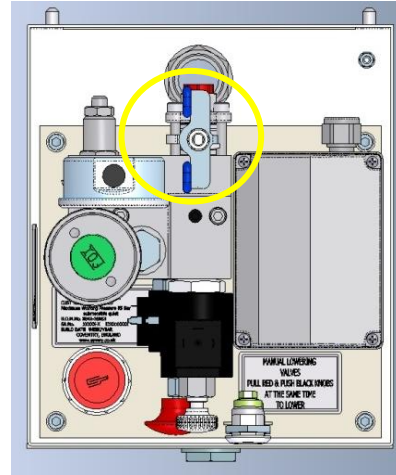


Fig 11.1 – Shut-off valve

10.2 Electrical Safety



The lift operates on one of the voltages systems stated in **section 4.6** on a dedicated supply with a 24Vdc control circuit. An electrical isolator switch is fitted adjacent to the lift. The powerpack and the power supply unit (reference page 7) both contain one of the voltages stated in **section 4.6**. Warning labels are fitted to both. Isolate the lift, and disconnect the batteries, where appropriate, when carrying out maintenance to avoid the risk of electrocution or unintentional movement.

10.3 Hydraulic Safety



The hydraulic system on the Homelift lift operates under high pressure. The hydraulic oil is mineral-based.

Fluid released from a pressurised hydraulic system can penetrate skin and lead to injury. **Before examining or working on the hydraulic system, ensure there is no pressure in the system.**

Wear appropriate personal protective equipment (PPE) and have a spill kit to hand as a precaution.

11. TECHNICAL INFORMATION

11.1 Anchorage and Forces

11.1.1 Mid-Floor - The main force applied to the building structure by the lift is a shear force through a steel structural beam onto two mid-floor joists either side of the lift. The maximum force applied to each of the two joists is 3150N. The structural beam is anchored to the two joists by eight M8 x 60 coach screws.

11.1.2 Lower Level - A maximum horizontal force of 1740N is applied to the lower floor level of the building via the floor track plate. The floor track plate is anchored to the building using No.12 x 1½" screws.

11.1.3 Upper Level A maximum horizontal force of 1580N is applied to the building via the fixings at the top of the tracks.

Where a **ceiling patch** is used, this is anchored to the ceiling joists using No.12 x 3 ½" screws. The load is spread across a minimum of three joists. The track fixing plate is anchored to the ceiling patch using No.12 x 1½" screws. Where a **wall bracket** is used, this is anchored to the wall using M8 or M10 fixings depending on the wall material.

11.2 Electrical Connection

The Homelift operates on one of the following supplies, depending on the country and option selected: -

- A dedicated 230Vac 50Hz supply protected by a double pole control switch rated at 20A and fused at 13A. The supply is wired back to the main distribution board where protection of 16A RCBO is provided.
- A dedicated 230Vac 60Hz Supply protected by a double pole control switch rated at 20A and fused at 13A. The supply is wired back to the main distribution board where protection of 16A RCBO is provided.
- A dedicated 120Vac 60Hz Supply protected by a double pole control switch rated at 20A and fused at 15A. The supply is wired back to the main distribution board where protection of 16A RCBO is provided.

11.3 Noise emission

The emission sound pressure level at the user's position is not expected to exceed 70 db(A).

QUICK START GUIDE

The following information is designed to be a step by step guide, and can be removed from this manual if required. The pages can be laminated and placed at the upper and lower locations for reference purposes.

Please note there are two options for the control circuit:

- One touch
- Hold to run

This function only applies to the up and down pushbuttons.

The hold to run option requires the relevant green arrow pushbutton on the call stations or In-car controls to be held constantly whilst the lift is travelling.

The applicable standards and personal circumstances dictate which option is selected.

Please note the Up and Down pushbuttons may be reversed from what is depicted in Figure 4, depending on which side the In-Car Control Console is mounted.

Only the available pushbuttons will illuminate.

If the lift is at the lower level, the up direction pushbutton will illuminate.

If the lift is at the upper level, the down direction pushbutton will illuminate.

Calling the Lift & travelling up

(With the lift at the upper floor level, and the user at the lower floor level)

1. Press the **Green** down direction button. See Fig 1

2. Allow the lift to descend and stop at the lower floor level.

3. Press & release the **Blue** door button.
(Press down the door safety edge, and pull the door open if a manual door. See Fig 2)

4. Enter the lift by reversing your wheelchair into the car, or use the seat if fitted. See Fig 3

5. Press & release the **Blue** door button to close the door. See Fig 4
(Pull the door closed if a manual door)

6. Press the illuminated **Green** up direction arrow button on the control console. See Fig 4

7. The lift will now travel to the upper floor level and stop.

8. When the lift has stopped, press and release the **Blue** door button. See Fig 4
(Push the door open if a manual door)

9. Exit the lift and close the door, by pressing the **Blue** door button. See Fig 1
(Push the door closed if a manual door)

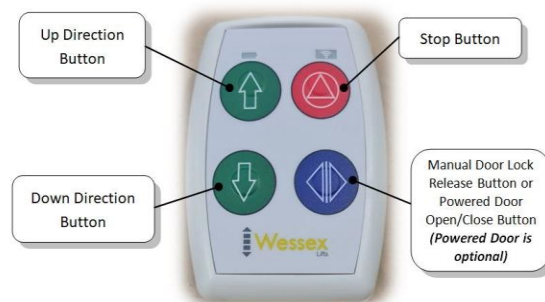


Fig 1 – Wireless Call Station

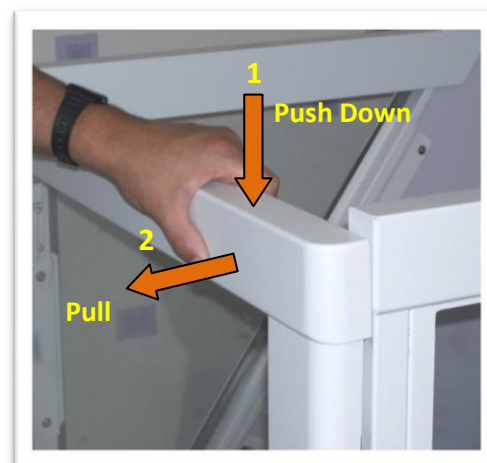


Fig 2 – Manually Open the Door



Fig 3 – Entering/Exiting the Car

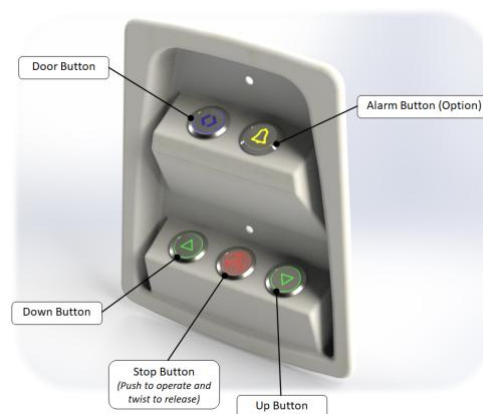


Fig 4 – In-car Control Buttons

Calling the Lift & travelling down

(With the lift at the lower floor level, and the user at the upper floor level)

1. Press the **Green** Up direction arrow Button.
See Fig 1

2. Wait for the lift to rise to the Upper floor level and stop.

3. Press & release the **Blue** door button.
(Press down the door safety edge, and pull the door open if a manual door. See Fig 2)

4. Enter the lift by reversing your wheelchair into the car, or use the seat if fitted. See Fig 3

5. Press & release the **Blue** door button to close the door. See Fig 4
(Pull the door closed if a manual door)

6. Press the illuminated **Green** down direction arrow button. See Fig 4

7. The lift will now travel to the lower floor level and stop.

8. When the lift has stopped, press and release the **Blue** door button. See Fig 4
(Push the door open if a manual door)

9. Exit the lift and close the door, by pressing the **Blue** door button. See Fig 1
(Push the door closed if a manual door)

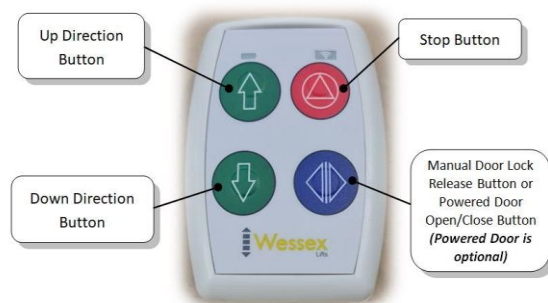


Fig 1 – Wireless Call Station

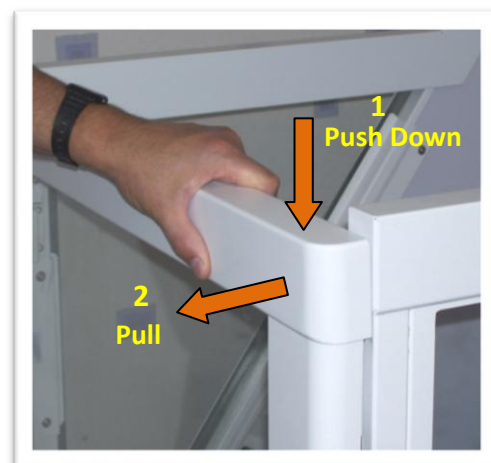


Fig 2 – Manually Open the Door



Fig 3 – Entering/Exiting the Car

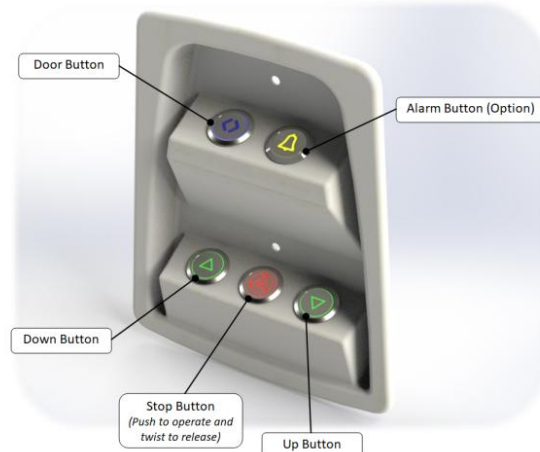


Fig 4 – In-car Control Buttons

Changing direction during Lift travel

(With the lift travelling, and the user in the lift)

DURING TRAVEL IN ANY DIRECTION

1. 'Hold to Run' Controls: Release the relevant button on the control console.

'One Touch' Controls: Press the stop button until it clicks and twist to release the **Stop** Button on the control console. See Fig 4

2. Wait for 3 seconds.

3. Press either **Green direction arrow button. See Fig 4**

Note:

You can reverse your direction of travel or carry on with the original direction of travel. This is indicated by the fact that both **Green** arrow buttons are illuminated on the control console.

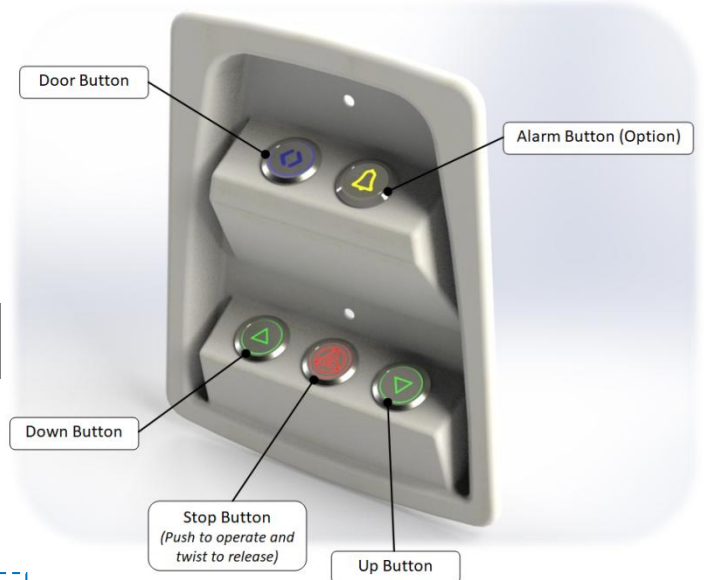


Fig 4 – In-car Control Buttons

SERVICE & INSPECTION RECORD

Service Period (Months)	Engineer's Name	Company	Signature	Date
6				
12 (1 Year)				
18				
24 (2 Years)				
30				
36 (3 Years)				
42				
48 (4 Years)				
54				
60 (5 Years)				
66				
72 (6 Years)				
78				
84 (7 Years)				
90				
96 (8 Years)				
102				
108 (9 Years)				
114				
120 (10 Years)				



EC Declaration of Conformity (Original)

The manufacturer of the products covered by this declaration is:-

'Wessex Lift Co Ltd', Budds Lane, Romsey, Hampshire,

SO51 0HA, United Kingdom

Declare that under sole responsibility that the products

'Wessex Homelift'

Known as Models

VM30, VM31, VM36, VM38, VM50, VM51, VM56, VM58

VM3136, VM3138, VM3638, VM3836, VM5156, VM5158, VM5658, VM5856

Serial No(s).....

are in conformity with the provisions of the following EC directives(s) when installed in accordance with the installation instructions.

Directives:

Machinery Directive: 2006/42/EC

Low Voltage Directive: 2014/35/EU

Electromagnetic Compatibility Directive: 2014/30/EU

Conformity Assessment Procedure:

As defined in Regulation 13 of Supply of Machinery (Safety) Regulations 2008.

The technical documentation required to demonstrate that the product meets the requirements of the above directives has been compiled by the signatory below and is available for inspection (at the manufacturers premises) by the relevant enforcement authorities.

The CE mark was first applied at the manufacturer's premises in 2009.

The products described above comply with the essential requirements of the directives specified.

Signed:

Authority: Managing Director

Date: 05/02/2020

